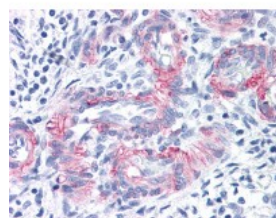




MCAM Antibody [P1H12]

CATALOG NUMBER: 51-346



Immunohistochemistry of human uterus
vessels stained using MCAM Monoclonal
Antibody.

Specifications

SPECIES REACTIVITY:	Human
TESTED APPLICATIONS:	FACS, IHC, IP, WB
APPLICATIONS:	MCAM antibody can be used in immunofluorescence starting at 0.7 - 2 ug/mL, Western Blot starting at 1 - 3 ug/mL, and immunohistochemistry starting at 5 ug/mL.
USER NOTE:	Optimal dilutions for each application to be determined by the researcher.
IMMUNOGEN:	Human umbilical vein cells
HOST SPECIES:	Mouse

Properties

PURIFICATION:	Affinity Purified
PHYSICAL STATE:	Liquid
BUFFER:	PBS, pH 7.2, <=0.09% sodium azide, BSA and/or gelatin
STORAGE CONDITIONS:	Store MCAM antibody at 4 °C. As with all antibodies avoid freeze/thaw cycles
CLONALITY:	Monoclonal
ISOTYPE:	IgG1
CONJUGATE:	Unconjugated

Additional Info

ALTERNATE NAMES:	MCAM, CD146, CD146 antigen, Gicerin, Melanoma adhesion molecule, MUC18, p1h12
ACCESSION NO.:	P43121
PROTEIN GI NO.:	85681878
OFFICIAL SYMBOL:	MCAM
GENE ID:	4162

Background

