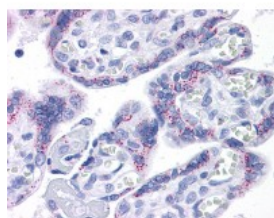




## SDC1 Antibody [DL-101]

CATALOG NUMBER: 51-347



Immunohistochemistry of human placenta tissue stained using SDC1 Monoclonal Antibody.

### Specifications

<b>SPECIES REACTIVITY:</b>	Human
<b>TESTED APPLICATIONS:</b>	FACS, IHC
<b>APPLICATIONS:</b>	SDC1 antibody can be used in Western Blot starting at 1:2000, immunohistochemistry starting at 5 ug/mL, and immunoprecipitation.
<b>USER NOTE:</b>	Optimal dilutions for each application to be determined by the researcher.
<b>IMMUNOGEN:</b>	Human SDC1
<b>HOST SPECIES:</b>	Mouse

### Properties

<b>PURIFICATION:</b>	Affinity Purified
<b>PHYSICAL STATE:</b>	Liquid
<b>BUFFER:</b>	PBS, pH 7.2, 150 mM sodium chloride, 0.09% sodium azide
<b>STORAGE CONDITIONS:</b>	Store SDC1 antibody at 4 °C. As with all antibodies avoid freeze/thaw cycles
<b>CLONALITY:</b>	Monoclonal
<b>ISOTYPE:</b>	IgG1,k
<b>CONJUGATE:</b>	Unconjugated

### Additional Info

<b>ALTERNATE NAMES:</b>	SDC1, CD138 antigen, SDC, SYND1, Syndecan, Syndecan 1, Syndecan-1, CD138, Syndecan proteoglycan 1
<b>ACCESSION NO.:</b>	P18827
<b>PROTEIN GI NO.:</b>	229463011
<b>OFFICIAL SYMBOL:</b>	SDC1
<b>GENE ID:</b>	6382

### Background

