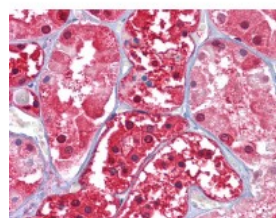




## GPI Antibody [1B7D7]

CATALOG NUMBER: 51-360



Immunohistochemistry of human kidney  
tissue stained using GPI Monoclonal  
Antibody.

### Specifications

<b>SPECIES REACTIVITY:</b>	Human
<b>TESTED APPLICATIONS:</b>	ELISA, IF, IHC, WB
<b>APPLICATIONS:</b>	GPI antibody can be used in ELISA starting at 1:000 - 1:1000, and immunohistochemistry starting at 10 ug/mL.
<b>USER NOTE:</b>	Optimal dilutions for each application to be determined by the researcher.
<b>IMMUNOGEN:</b>	Recombinant protein
<b>HOST SPECIES:</b>	Mouse

### Properties

<b>PURIFICATION:</b>	Ascites
<b>PHYSICAL STATE:</b>	Liquid
<b>BUFFER:</b>	0.03% sodium azide
<b>STORAGE CONDITIONS:</b>	GPI antibody should be stored long term (months) at -20 °C and short term (weeks) at 4 °C. As with all antibodies avoid freeze/thaw cycles.
<b>CLONALITY:</b>	Monoclonal
<b>ISOTYPE:</b>	IgG1
<b>CONJUGATE:</b>	Unconjugated

### Additional Info

<b>ALTERNATE NAMES:</b>	GPI, AMF, Autocrine motility factor, Glucose phosphate isomerase, Hexose monophosphate isomerase, Hexosephosphate isomerase, Neuroleukin, Oxoisomerase, Phosphoglucose isomerase, Phosphohexomutase, Phosphohexose isomerase, SA36, PGI, SA-36, Glucose-6-phosphate isomerase, GNPI, PHI, Phosphosaccharomutase, Sperm antigen 36, Sperm antigen-36
<b>ACCESSION NO.:</b>	P06744
<b>PROTEIN GI NO.:</b>	17380385
<b>OFFICIAL SYMBOL:</b>	GPI
<b>GENE ID:</b>	2821

