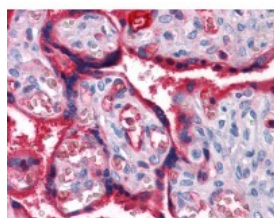




A1BG Antibody [4B5]

CATALOG NUMBER: 51-401



Immunohistochemistry of human placenta tissue stained using A1BG Monoclonal Antibody.

Specifications

SPECIES REACTIVITY:	Human
TESTED APPLICATIONS:	ELISA, IHC, WB
APPLICATIONS:	A1BG antibody can be used in ELISA, Western Blot starting at 0.5 - 2 ug/mL, and immunohistochemistry starting at 10 ug/mL.
USER NOTE:	Optimal dilutions for each application to be determined by the researcher.
IMMUNOGEN:	Recombinant protein
HOST SPECIES:	Mouse

Properties

PURIFICATION:	Ascites
PHYSICAL STATE:	Liquid
BUFFER:	0.03% sodium azide
STORAGE CONDITIONS:	A1BG antibody should be stored long term (months) at -20 °C and short term (weeks) at 4 °C. As with all antibodies avoid freeze/thaw cycles.
CLONALITY:	Monoclonal
ISOTYPE:	IgG1
CONJUGATE:	Unconjugated

Additional Info

ALTERNATE NAMES:	A1BG, A1B, ABG, GAB, HYST2477, Alpha-1-B glycoprotein, Alpha-1B-glycoprotein
ACCESSION NO.:	P04217
PROTEIN GI NO.:	317373553
OFFICIAL SYMBOL:	A1BG
GENE ID:	1

Background

