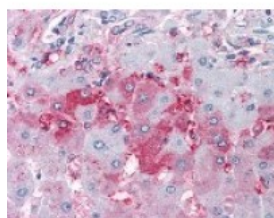




DUSP26 Antibody

CATALOG NUMBER: 48-304



Immunohistochemistry staining of
DUSP26 in liver tissue using DUSP26
Antibody.

Specifications

SPECIES REACTIVITY:	Bovine, Gibbon, Gorilla, Hamster, Horse, Human, Monkey, Mouse, Orangutan, Rat
TESTED APPLICATIONS:	ELISA, IHC
APPLICATIONS:	DUSP26 antibody can be used in immunohistochemistry starting at 10 ug/mL.
USER NOTE:	Optimal dilutions for each application to be determined by the researcher.
SPECIFICITY:	BLAST analysis of the peptide immunogen showed no homology with other human proteins, except DUSP27 (61%).
IMMUNOGEN:	DUSP26 antibody was raised against a peptide located near the internal domain of DUSP26 (Human).
HOST SPECIES:	Rabbit

Properties

PURIFICATION:	Immunoaffinity Chromatography
PHYSICAL STATE:	Liquid
BUFFER:	PBS, 0.1% sodium azide.
STORAGE CONDITIONS:	DUSP26 antibody should be stored long term (months) at -80 °C and short term (days) at 4 °C. As with all antibodies avoid freeze/thaw cycles.
CLONALITY:	Polyclonal
CONJUGATE:	Unconjugated

Additional Info

ALTERNATE NAMES:	DUSP26, DSP-4, NATA1, SKRP3, MAP kinase phosphatase 8, MKP-8, DUSP24, LDP-4, LDP4, MKP8
ACCESSION NO.:	Q9BV47
PROTEIN GI NO.:	74752374
OFFICIAL SYMBOL:	DUSP26
GENE ID:	78986

Background

BACKGROUND: MGC1136 is classified as a dual specificity MAP kinase phosphatase.

FOR RESEARCH USE ONLY

December 13, 2016