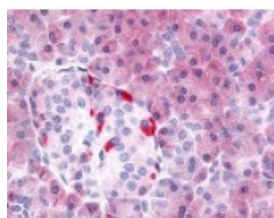




PDE7B Antibody

CATALOG NUMBER: 48-313



Immunohistochemistry staining of PDE7B
in pancreas tissue using PDE7B Antibody.

Specifications

SPECIES REACTIVITY:	Gibbon, Gorilla, Human, Monkey
TESTED APPLICATIONS:	IHC
APPLICATIONS:	PDE7B antibody can be used in ELISA, Western Blot starting at 1:1000 - 1:3000, and immunohistochemistry starting at 5 ug/mL.
USER NOTE:	Optimal dilutions for each application to be determined by the researcher.
SPECIFICITY:	BLAST analysis of the peptide immunogen showed no homology with other human proteins.
IMMUNOGEN:	PDE7B antibody was raised against a peptide located near the internal domain of PDE7B (Human).
HOST SPECIES:	Rabbit

Properties

PURIFICATION:	Immunoaffinity Chromatography
PHYSICAL STATE:	Liquid
BUFFER:	PBS, 0.1% sodium azide.
STORAGE CONDITIONS:	PDE7B antibody should be stored long term (months) at -80 °C and short term (days) at 4 °C. As with all antibodies avoid freeze/thaw cycles.
CLONALITY:	Polyclonal
CONJUGATE:	Unconjugated

Additional Info

ALTERNATE NAMES:	PDE7B, BA472E5.1, Phosphodiesterase 7B
ACCESSION NO.:	Q9NP56
PROTEIN GI NO.:	13626185
OFFICIAL SYMBOL:	PDE7B
GENE ID:	27115

Background

BACKGROUND: Phosphodiesterase 7B, a cAMP-specific phosphodiesterase, has been shown to affect cAMP-mediated neural

activity and cAMP metabolism in the brain. PDE7B activity is inhibited by dipyridamole, IBMX, and SCH51866. At least three splice variants have been isolated for PDE7B from rats and they show tissue specific expression patterns.

FOR RESEARCH USE ONLY

December 13, 2016