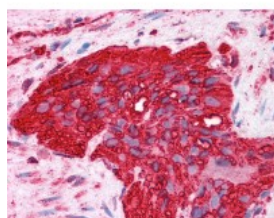




## Alpha Tubulin Antibody [DM1A]

CATALOG NUMBER: 51-349



Immunohistochemistry of human colon,  
myenteric plexus tissue stained using  
Alpha Tubulin Monoclonal Antibody.

### Specifications

<b>SPECIES REACTIVITY:</b>	Amphibian, Bovine, Dog, Goat, Guinea Pig, Hamster, Human, Kangaroo, Monkey, Mouse, Pig, Rat, Sea Urchin, Yeast
<b>TESTED APPLICATIONS:</b>	IHC, IP, WB
<b>APPLICATIONS:</b>	Alpha Tubulin antibody can be used in ELISA, Western Blot, and immunohistochemistry starting at 5 ug/mL.
<b>USER NOTE:</b>	Optimal dilutions for each application to be determined by the researcher.
<b>IMMUNOGEN:</b>	Human Tubulin Alpha
<b>HOST SPECIES:</b>	Mouse

### Properties

<b>PURIFICATION:</b>	Affinity Purified
<b>PHYSICAL STATE:</b>	Liquid
<b>BUFFER:</b>	Aqueous buffer, 0.09% sodium azide, contains stabilizer if necessary
<b>STORAGE CONDITIONS:</b>	Store Alpha Tubulin antibody at 4 °C. As with all antibodies avoid freeze/thaw cycles
<b>CLONALITY:</b>	Monoclonal
<b>ISOTYPE:</b>	IgG1,k
<b>CONJUGATE:</b>	Unconjugated

### Additional Info

<b>ALTERNATE NAMES:</b>	TUBA3, Tubulin alpha-1A chain, Alpha-tubulin 3LIS3, B-ALPHA-1
<b>ACCESSION NO.:</b>	Q71U36
<b>PROTEIN GI NO.:</b>	55977864
<b>OFFICIAL SYMBOL:</b>	TUBA1A
<b>GENE ID:</b>	7846

### Background

