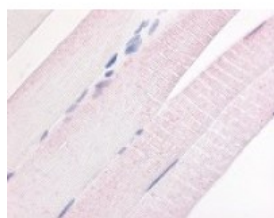




PDE7A Antibody

CATALOG NUMBER: 48-311



Immunohistochemistry staining of PDE7A
in skeletal muscle tissue using PDE7A
Antibody.

Specifications

SPECIES REACTIVITY:	Bat, Bovine, Dog, Gibbon, Gorilla, Human, Monkey, Orangutan, Xenopus
TESTED APPLICATIONS:	IHC
APPLICATIONS:	PDE7A antibody can be used in ELISA, Western Blot starting at 1:500 - 1:1000, and immunohistochemistry starting at 5 ug/mL.
USER NOTE:	Optimal dilutions for each application to be determined by the researcher.
SPECIFICITY:	BLAST analysis of the peptide immunogen showed no homology with other human proteins.
IMMUNOGEN:	PDE7A antibody was raised against a peptide located in the N-Terminal region of PDE7A (Human).
HOST SPECIES:	Rabbit

Properties

PURIFICATION:	Immunoaffinity Chromatography
PHYSICAL STATE:	Liquid
BUFFER:	PBS, 0.1% sodium azide.
STORAGE CONDITIONS:	PDE7A antibody should be stored long term (months) at -80 °C and short term (days) at 4 °C. As with all antibodies avoid freeze/thaw cycles.
CLONALITY:	Polyclonal
CONJUGATE:	Unconjugated

Additional Info

ALTERNATE NAMES:	PDE7A, PDE7A1, PDE7A2, Phosphodiesterase 7A, Phosphodiesterase isozyme 7, PDE7, HCP1, TM22
ACCESSION NO.:	Q13946
PROTEIN GI NO.:	3182958
OFFICIAL SYMBOL:	PDE7A
GENE ID:	5150

Background

BACKGROUND:

Phosphodiesterase 7A, a cAMP-specific phosphodiesterase, has been shown to affect memory, T-cell functioning and emesis and has been implicated in depression. Two isoforms (PDE7A1 and PDE7A2) which differ at their N-terminal region, have been reported.

FOR RESEARCH USE ONLY

December 13, 2016